



AS THE SEMESTER WRAPS UP, IT IS TIME FOR PRE-HEALTH STUDENTS TO RECHARGE AND GET AHEAD!

Use the upcoming Thanksgiving and Winter breaks to relax and celebrate your hard work, but also consider a few productive activities. Reflect on the semester and set new goals, update your resume, and explore shadowing opportunities to gain hands-on experience. Volunteering or joining a health-related project can also deepen your understanding of the field. Finally, catch up on reading, revisit class materials, and review challenging concepts. A balance of rest and preparation now can set you up for a strong start next semester!

Boost your knowledge, spark your passion – dive into these must-watch docs, podcasts, and channels for future healthcare pros!

Documentaries



"The Bleeding Edge" (Netflix) - This documentary explores the side effects and ethical issues surrounding medical devices, shedding light on healthcare technology.

"Pandemic: How to Prevent an Outbreak" (Netflix) - A timely look at infectious diseases, public health, and the professionals on the front lines of global health.

Podcasts



"The Short Coat Podcast" - Hosted by medical students, this podcast covers everything from admissions tips to current issues in medicine.

"The Nocturnists" - Medical professionals share stories from their practice, giving listeners an emotional and behind-the-scenes view of healthcare.

Thanksgiving
Break
11/25-29

Are you thankful? Consider serving your community.



Community Service Events



Dual Degree Spotlight

Master of Occupational Therapy

Carthage College has a dual degree program with Washington University in St. Louis for their Master of Occupation Therapy program. Current students can apply during their sophomore year and enter the program after their 3rd year at Carthage.



The program allows students to apply early and begin their education before completing all credit needed to graduate from Carthage. However, students are still required to complete all major classes and general education requirements at Carthage. If you are interested in learning more, reach out to Ashley Greenwood @ agreenwood@carthage.edu.



FOLLOW US

**Pre-Health Advising is
now on Instagram!**

Follow us to stay up to date on pre-health opportunities! Scan below or find us

@Carthage_prehealth_advising

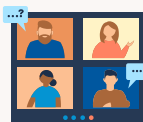


How to find the right professional school for you...

#1: Identify Your Priorities

When prioritizing professional schools to apply to, students should ask themselves questions about their **career goals, program focus, faculty expertise, location, cost, funding availability, class sizes, reputation, and overall fit** with their personal learning style and desired lifestyle.

What means the most to you?



#2: Research Programs

Here's a list of important factors for pre-health students to research when considering professional schools:

1. Mission and Values: Ensure the school's mission aligns with your career goals and values.
2. Curriculum Structure: Review course structure, including any unique features like problem-based learning or integrated clinical experiences.
3. Special Programs: Look for dual-degree options, research opportunities, or interprofessional collaboration programs that may enhance your education.
4. Admission Requirements: Familiarize yourself with prerequisites, required experiences, and any standardized test scores.



Personal Statement Workshop

If you are planning to apply to a healthcare graduate program within 1 year, you need to sign up for the workshop. First session is 12/2 at 4:30 pm

#3: Virtual or In-Person Visit

We encourage students to join virtual program sessions hosted by their interested schools. These events can be found on the program's admission website.

Once you have your schools narrowed down, we encourage students to tour the campus and meet with the program administration to fully understand if the program is the right fit for you.

Benefits of virtual and in-person visits are

Gaining a visual perspective

Connecting with faculty and staff

Understanding student life

Assessing program fit

Asking specific questions



It is *not just about if you get into a professional school* or not. You will spend a considerable time and effort in the program and need to make sure it is **the correct place for you!**



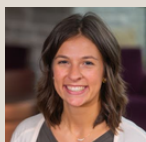
Need Help tracking schools? Check out
map

Have you completed any shadowing?

We created a shadowing log for all pre-health students to track their experiences in their MAP. This allows students to revisit experiences from previous years! Log your hours today!



Need Pre-Health Support?? Connect with the Pre-Health Advising team!



Mandy Long, M.Ed
along3@carthage.edu

Aspire Center
Schedule Meeting via [Navigate](#)



Ashley Greenwood, MS, LAT
agreenwood@carthage.edu
TARC 2010 E
Schedule Meeting via Email